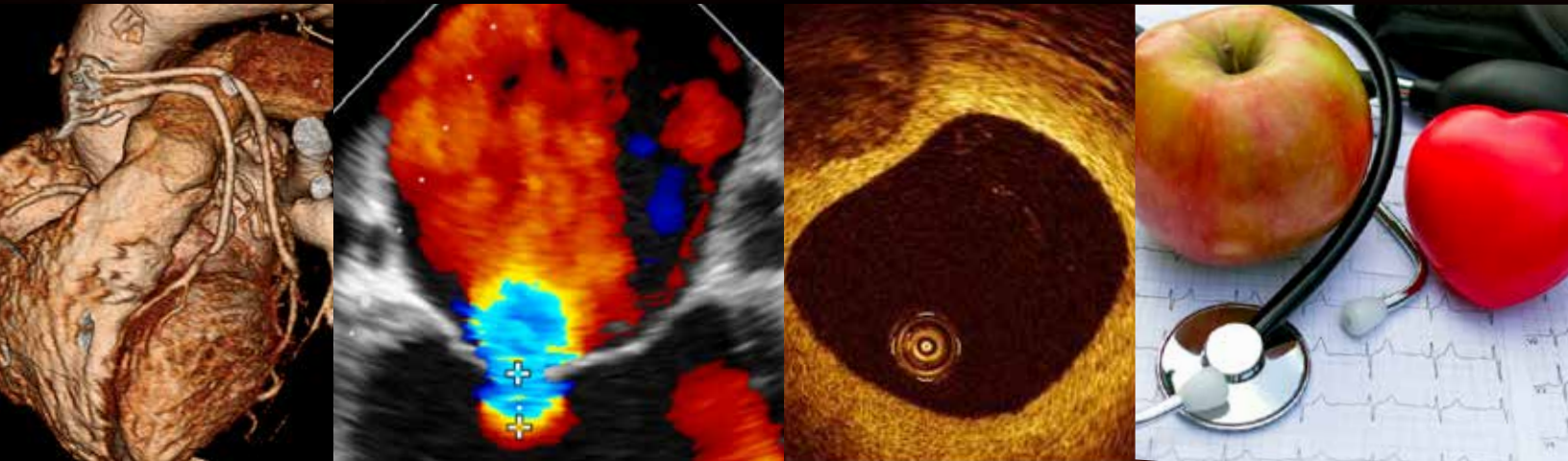


# 27th Annual Cardiovascular Conference

America's Premier Meeting on  
Innovations in Cardiovascular Medicine



**Feb. 10 - 14, 2018**

Park Hyatt Beaver Creek, Beaver Creek, CO

## Course Directors

Simon Dixon, MBChB | Bernard Gersh, MBChB, DPhil | Christopher Granger, M.D.  
John Messenger, M.D. | Renato Ramos, M.D.

*Sponsored by*

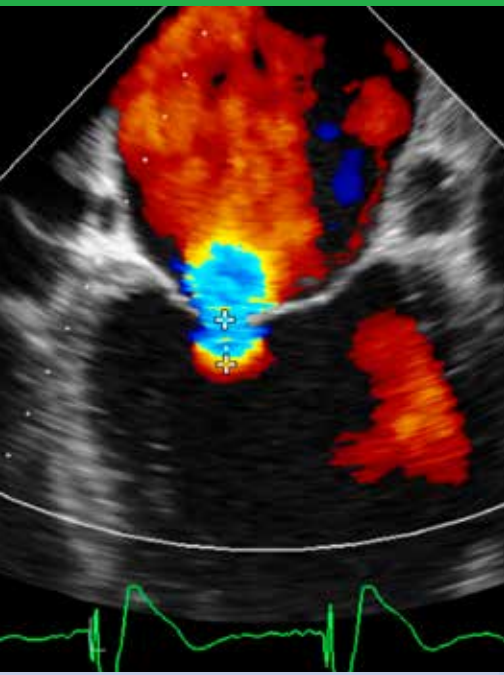
**Beaumont**



Colorado  
CHAPTER

*In collaboration with*

**Duke University School of Medicine  
Mayo Clinic  
University of Colorado School of Medicine**



# INTRODUCTION

The 27th Annual Cardiovascular Conference in Beaver Creek, Colorado has been designed to provide a comprehensive review of the latest advances, current trends and new innovative therapies for cardiovascular disease, delivered by national leaders in cardiovascular medicine. Interact with faculty during case-based sessions that address challenges in the diagnosis and management of common cardiovascular conditions such as coronary artery disease, congestive heart failure and valve disease.

The course will also feature case-based fellows programs and a focus session on Innovations and Healthcare Reform.

## COURSE HIGHLIGHTS

- CV Team Symposium geared toward NP's, RN's, PA's, sonographers and pharmacists
- case-based presentations
- fellows program
- world-renowned faculty
- networking lunches

## OBJECTIVES

By attending this conference, attendees should improve their ability to:

- describe new diabetic agents that prevent cardiovascular events
- discuss treatment goals in hypertension
- discuss advances in the non-invasive evaluation of coronary disease
- review innovations in pulmonary embolism care
- discuss whether to treat subclinical atrial fibrillation
- discuss the importance of frailty testing in cardiovascular disease
- describe how the new valve guidelines will impact practice

## TARGET AUDIENCE

This conference is designed for cardiologists, cardiothoracic surgeons, vascular medicine specialists, and other cardiology health care providers.

## CME ACCREDITATION AND CREDIT DESIGNATION

This activity has been planned and implemented in accordance with the accreditation requirements and policies of the Accreditation Council for Continuing Medical Education through the joint providership of Beaumont Health and Colorado Chapter of the American College of Cardiology, Duke University, Mayo Clinic, and the University of Colorado. Beaumont Health is accredited by the ACCME to provide continuing medical education for physicians.

Beaumont Health designates this live activity for a maximum of 24.75 *AMA PRA Category 1 Credit(s)*<sup>™</sup>. Physicians should claim only the credit commensurate with the extent of their participation in the activity.

Saturday = 4.5, Sunday = 4.75, Monday = 6.5, Tuesday = 6.5, Wednesday = 2.5

Non-physician professionals should check with their individual credentialing bodies to confirm that participation in this CME activity will be approved for credit. CME credits can be used to meet the continuing education requirements needed for Michigan physician assistant and nursing relicensure without limitation.

## ACKNOWLEDGEMENT

This conference will be partially supported by educational grants and display fees from commercial supporters.





# FACULTY

## COURSE DIRECTORS

### **Simon R. Dixon, MBChB**

Professor of Medicine  
Oakland University  
William Beaumont (OUWB)  
School of Medicine  
Chair, Department of  
Cardiovascular Medicine  
Dorothy Susan Timmis Endowed  
Chair of Cardiology  
Beaumont Hospital, Royal Oak  
Royal Oak, MI

### **Bernard J. Gersh, MBChB, DPhil**

Professor of Medicine  
Consultant, Division of  
Cardiovascular Diseases  
Mayo Clinic  
Rochester, MN

### **Christopher B. Granger, M.D.**

Professor of Medicine  
Director, Cardiac Care Unit  
Duke University Medical Center  
Durham, NC

### **John C. Messenger, M.D.**

Professor of Medicine  
University of Colorado  
School of Medicine  
Director, Cardiac Catheterization Lab  
Division of Cardiology  
Director, Cardiovascular ICU  
University of Colorado Hospital  
Aurora, CO

### **Renato G. Ramos, M.D.**

Associate Professor of Medicine  
OUWB School of Medicine  
Emeritus Director  
Cardiac Catheterization Lab  
Beaumont Hospital, Royal Oak  
Royal Oak, MI  
Founding Director

## FACULTY

### **Amr E. Abbas, M.D.**

Associate Professor of Medicine  
OUWB School of Medicine  
Director, Interventional  
Cardiology Research  
Beaumont Hospital, Royal Oak  
Royal Oak, MI

### **Karen P. Alexander, M.D.**

Professor of Medicine, Cardiology  
Co-Director, Integrated Clinical Events  
and Safety Surveillance (ICE-SS)  
Faculty Leader for Safety Surveillance  
Duke University School of Medicine  
Durham, NC

### **Larry A. Allen, M.D., MHS**

Associate Professor of Medicine  
Heart Failure/Cardiac Transplantation  
Division of Cardiology  
University of Colorado  
School of Medicine  
Aurora, CO

### **Aaron D. Berman, M.D.**

Associate Professor of Medicine  
OUWB School of Medicine  
Clinical Chief of Cardiology  
Beaumont Hospital, Royal Oak  
Royal Oak, MI

### **Terry R. Bowers, M.D.**

Assistant Professor of Medicine  
OUWB School of Medicine  
Director, Vascular Medicine  
Beaumont Hospital, Royal Oak  
Royal Oak, MI

### **Todd M. Bull, M.D.**

Professor of Medicine  
Director, Center for Lungs and Breathing  
Director, Pulmonary Vascular  
Disease Center  
University of Colorado  
School of Medicine  
Aurora, CO

### **Robert M. Califf, M.D.**

Donald F. Fortin, M.D.  
Professor of Cardiology  
Duke University School of Medicine  
Durham, NC

### **John D. Carroll, M.D.**

Professor of Medicine  
Division of Cardiology  
University of Colorado  
School of Medicine  
Director, Interventional Cardiology  
Co-Director, Cardiac and  
Vascular Center  
University of Colorado Hospital  
Aurora, CO

### **Joseph C. Cleveland, Jr., M.D.**

Professor of Surgery  
Surgical Director  
Cardiac Transplantation/  
Mechanical Support  
Division of Cardiothoracic Surgery  
University of Colorado  
School of Medicine  
Aurora, CO

### **James M. Colar, RN, MSN, ACNP-BC**

Nurse Practitioner  
Department of Cardiovascular Medicine  
Beaumont Hospital, Royal Oak  
Royal Oak, MI

### **Frances A. Cosgrove, MSN, NP-C**

Nurse Practitioner  
Duke University Medical Center  
Durham, NC

### **Kyle J. Feldmann, M.D.**

Cardiology Fellow  
Beaumont Hospital, Royal Oak  
Royal Oak, MI

### **Michael J. Gallagher, M.D.**

Associate Professor of Medicine  
OUWB School of Medicine  
Director, Advanced Cardiac Imaging,  
Beaumont Hospital, Troy  
Director, Clinical Cardiology  
Fellowship Program  
Beaumont Hospital, Royal Oak  
Royal Oak, MI

### **Michael R. Gold, M.D.**

Professor of Medicine  
Chief of Cardiology  
Medical University of South Carolina  
Charleston, SC

### **David E. Haines, M.D.**

Professor of Medicine  
OUWB School of Medicine  
Director, Heart Rhythm Center  
Beaumont Hospital, Royal Oak  
Royal Oak, MI

### **Abdul R. Halabi, M.D.**

Associate Professor of Medicine  
OUWB School of Medicine  
Interventional Cardiologist  
Beaumont Hospital, Royal Oak  
Royal Oak, MI

### **George S. Hanzel, M.D.**

Associate Professor of Medicine  
OUWB School of Medicine  
Director, Cardiac Catheterization Lab  
Director, Valve and Structural Heart Disease  
Beaumont Hospital, Royal Oak  
Royal Oak, MI

### **Timothy D. Henry, M.D.**

Professor, Department of Medicine  
Lee and Harold Kapelovitz Chair  
in Research Cardiology  
Director, Division of Cardiology  
Cedars-Sinai Heart Institute  
Los Angeles, CA

### **Janice V. Huang, MD**

General Cardiology  
Memorial Hospital  
University of Colorado Health  
Colorado Springs, CO

### **C. David Joffe, M.D.**

President  
The Heart Institute of Dayton  
Dayton, OH

### **James G. Jollis, M.D., F.A.C.C.**

Clinical Professor of Medicine  
University of North Carolina  
Director of Cardiovascular Imaging  
North Carolina Heart and Vascular  
Raleigh, NC

### **Daniel B. Mark, M.D.**

Professor of Medicine  
Duke Clinical Research Institute  
Vice Chief for Academic Affairs  
Division of Cardiology  
Duke University Medical Center  
Durham, NC

### **Heather Mazzola, ACNP-BC, AACC**

Cardiology Nurse Practitioner  
UC Health Medical Group  
Colorado Springs, CO

### **Manesh R. Patel, M.D.**

Professor of Medicine  
Chief, Divisions of Cardiology  
and Clinical Pharmacology  
Duke University Medical Center  
Durham, NC

### **Eric D. Peterson, M.D.**

Fred Cobb, M.D. Professor of Medicine  
Director, Duke Clinical Research Institute  
Duke University Medical Center  
Durham, NC

### **Sean D. Pokorney, M.D.**

Assistant Professor of Medicine  
Duke University Medical Center  
Durham, NC

### **Maher M. Rabah, D.O.**

Assistant Professor of Medicine  
OUWB School of Medicine  
Director, Cardiac Catheterization Lab  
Beaumont Hospital, Farmington Hills  
Farmington Hills, MI

### **Meena P. Rao, M.D., MPH**

Cardiologist  
NHRMC Physician Group  
Cape Fear Heart Associates  
Wilmington, NC

### **R. Kevin Rogers, M.D.**

Associate Professor of Medicine  
Interventional Cardiology/  
Vascular Medicine  
Division of Cardiology  
University of Colorado  
School of Medicine  
Aurora, CO

### **John S. Rumsfeld, M.D., Ph.D.**

Professor of Medicine  
Chief Innovation Officer, ACC  
Division of Cardiology  
University of Colorado  
School of Medicine  
Aurora, CO

### **Robert D. Safian, M.D.**

Professor of Medicine  
OUWB School of Medicine  
Director, Center for Innovation and  
Research in Cardiovascular Disease  
Lucia Zurkowski Endowed  
Chair for CIRC  
Director, Interventional  
Cardiology Fellowship  
Beaumont Hospital, Royal Oak  
Royal Oak, MI

### **Gregory G. Schwartz, M.D., Ph.D.**

Professor of Medicine  
University of Colorado  
School of Medicine  
Chief of Cardiology  
Denver VAMC  
Denver, CO

### **Justin E. Trivax, M.D.**

Assistant Professor of Medicine  
OUWB School of Medicine  
Interventional Cardiologist  
Beaumont Hospital, Royal Oak  
Royal Oak, MI

### **Dominik Wiktor, M.D.**

Assistant Professor of Medicine  
Interventional Cardiologist  
University of Colorado Hospital  
Aurora, CO

# SCHEDULE OF EVENTS

## SAT, FEB. 10

### 12:00 – 6:00 p.m. 2nd Annual CV Team Symposium

**Lunch provided**  
sponsored by COACC

**Moderators: James Colar, Frances Cosgrove,  
Heather Mazzola**

### Heart Failure and EP

12:00 – 12:20 p.m.	HFpEF	Janice Huang
12:20 – 12:40 p.m.	Advanced Heart Failure: LVAD, Transplant	Larry Allen
12:40 – 1:00 p.m.	Case Presentation	Heather Mazzola
1:00 – 1:20 p.m.	CRT: Guidelines	Meena Rao
1:20 – 1:40 p.m.	VT Ablation	David Haines
1:40 – 2:00 p.m.	Case Presentation	James Colar

### 2:00 – 2:15 p.m. Break

### 2:15 – 3:15 p.m. Hands-On Break Out Session

**Moderator: Kyle Feldmann**

*Attendees will have the opportunity to gain hands-on training during sessions which combine presentations by a clinical or technical expert on a specific topic with a tutorial that leads you through procedures with a particular device, piece of equipment or workstation. Don't miss this session to sample new technology and interventions and review basic cardiac anatomy on heart specimens. NON-CME*

### 3:15 – 3:30 p.m. Break

### Coronary and Structural Disease

3:30 – 3:50 p.m.	Mechanical Support Use in ACS	Abdul Halabi
3:50 – 4:10 p.m.	Don't Waste Time: Quick Revascularization	Justin Trivax
4:10 – 4:30 p.m.	Pregnancy in Heart Disease	Aaron Berman
4:30 – 4:50 p.m.	TAVR Update	Dominik Wiktor
4:50 – 5:10 p.m.	Ischemic vs. Functional MR	George Hanzel
5:10 – 5:30 p.m.	Case Presentation	Frances Cosgrove
5:30 – 6:00 p.m.	Q & A	Panel

## SUN, FEB. 11

### 6:30 – 7:00 a.m. Breakfast and Exhibits

### 7:00 – 9:30 a.m. Plenary Session

**Moderator: Bernard Gersh**

7:00 – 7:10 a.m.	Welcome	Renato Ramos
7:10 – 7:35 a.m.	Diabetic Agents That Prevent CV Events: What Every Practitioner Needs to Know	Gregory Schwartz
7:35 – 8:00 a.m.	Regionalizing the Response to Cardiovascular Emergencies	James Jollis
8:00 – 8:25 a.m.	New Directions with Anticoagulation for Vascular Disease	Christopher Granger
8:25 – 8:50 a.m.	Heart Rhythm Innovations: What Lies Ahead?	David Haines

8:50 – 9:15 a.m. Search and Android Assessment  
of Biology and Social Interactions Robert Califf

9:15 – 9:30 a.m. Q&A Panel

### 12:00 – 1:30 p.m. Lunch

### 2:00 – 2:30 p.m. Exhibits

### 2:30 – 4:00 p.m. Complex and High Risk Coronary Intervention: Tips and Tricks

**Registration is required**

sponsored by Abiomed and Boston Scientific NON-CME

**Moderators: Manesh Patel, Maher Rabah**

2:30 – 2:45 p.m. Optimizing Outcomes with  
Rotational Atherectomy Robert Safian

2:45 – 3:00 p.m. Access Site Management for  
Impella Supported Therapy David Joffe

3:00 – 3:15 p.m. How to Learn CTO Interventions:  
What Does it Take? Maher Rabah

3:15 – 3:30 p.m. LV and RV Support in  
Cardiogenic Shock Manesh Patel

3:30 – 3:45 p.m. Case Presentations Justin Trivax

3:45 – 4:00 p.m. Q&A Panel

### 4:00 – 6:30 p.m. Focus Session: Industry, Innovation and Healthcare Reform

**Moderators: Eric Peterson, Robert Safian**

4:00 – 4:25 p.m. PCSK9 Inhibitors:  
Breakthrough in LDL Lowering  
or Breakdown in Value? Daniel Mark

4:25 – 4:50 p.m. What is the Future of Cardiovascular  
Drug Development? Robert Califf

4:50 – 5:15 p.m. Artificial Intelligence in  
Cardiovascular Care:  
Hope, Hype and Reality John Rumsfeld

5:15 – 5:40 p.m. Expansion of TAVR to Low-Risk  
Patients: A Natural Progression or  
Cause for Concern? Bernard Gersh

5:40 – 6:05 p.m. Mitral and Tricuspid  
Valve Replacement John Carroll

6:05 – 6:30 p.m. Roundtable Discussion Panel

### 6:30 – 9:00 p.m. Welcome Reception

## MON, FEB. 12

### 6:30 – 7:00 a.m. Breakfast and Exhibits

### 7:00 – 9:45 a.m. Heart Rhythm

**Moderators: David Haines, Sean Pokorney**

7:00 – 7:25 a.m. Should Patients with Dilated  
Cardiomyopathy Receive an ICD? Michael Gold

7:25 – 7:50 a.m. Subclinical Atrial Fibrillation:  
To Treat or Not to Treat? Sean Pokorney

7:50 – 8:15 a.m. Does AF Ablation Improve Longevity? David Haines

8:15 – 8:40 a.m.	Bleeding Avoidance in Atrial Fibrillation: More Data to Guide Best Practice	Christopher Granger
8:40 – 9:05 a.m.	Dysautonomias: Neurocardiogenic Syncope and POTS	Michael Gold
9:05 – 9:30 a.m.	His Bundle Pacing: Will it Replace CRT?	Sean Pokorney
9:30 – 9:45 a.m.	Q&A	Panel
<b>12:00 – 1:30 p.m.</b>	<b>Lunch</b>	
<b>2:00 – 2:30 p.m.</b>	<b>Exhibits</b>	
<b>2:30 – 3:50 p.m.</b>	<b>Fellows Program: Nightmare Cases in the Cath Lab</b> <b>Moderators: Abdul Halabi, Manesh Patel</b> <b>Panel: Terry Bowers, John Messenger, Justin Trivax</b>	
<b>4:00 – 6:30 p.m.</b>	<b>Coronary Artery and Peripheral Vascular Disease</b> <b>Moderators: Timothy Henry, John Messenger</b>	
4:00 – 4:25 p.m.	Stable IHD Revisited: Angina, Ischemia and Coronary Stenosis	Karen Alexander
4:25 – 4:50 p.m.	Advances in the Non-Invasive and Invasive Evaluation of Coronary Artery Disease	Robert Safian
4:50 – 5:15 p.m.	PCI Appropriateness: Where Are We?	Manesh Patel
5:15 – 5:40 p.m.	Dual Antiplatelet Therapy: Deciding on Duration	John Messenger
5:40 – 6:05 p.m.	Management of Refractory Angina	Timothy Henry
6:05 – 6:30 p.m.	Perspectives on 40 Years of PCI	Renato Ramos

## TUES, FEB. 13

<b>6:30 – 7:00 a.m.</b>	<b>Breakfast and Exhibits</b>	
<b>7:00 – 9:45 a.m.</b>	<b>Valve and Structural Heart Disease</b> <b>Moderators: James Jollis, Robert Safian</b>	
7:00 – 7:25 a.m.	How Will the New Valve Guidelines Change Our Practice?	Michael Gallagher
7:25 – 7:50 a.m.	Decision Making in Mitral Valve Disease	Joseph Cleveland
7:50 – 8:15 a.m.	Mitral Regurgitation: Update on Percutaneous Therapies	James Jollis
8:15 – 8:40 a.m.	Assessing Frailty and Function: Implications for Cardiovascular Care	Karen Alexander
8:40 – 9:05 a.m.	Left Atrial Appendage Occlusion for Stroke Prevention	George Hanzel
9:05 – 9:30 a.m.	PFO Closure: What Does the Data Tell Us Now?	Amr Abbas
9:30 – 9:45 a.m.	Q&A	Panel
<b>12:00 – 1:30 p.m.</b>	<b>Lunch</b>	

<b>2:00 – 2:30 p.m.</b>	<b>Exhibits</b>	
<b>2:30 – 3:50 p.m.</b>	<b>Fellows Program: Tough Clinical Calls</b> <b>Moderators: Michael Gallagher, Daniel Mark</b> <b>Panel: Larry Allen, Bernard Gersh, Christopher Granger, James Jollis</b>	
<b>4:00 – 6:30 p.m.</b>	<b>Heart Failure and Cardiomyopathy</b> <b>Moderators: Aaron Berman, Larry Allen</b>	
4:00 – 4:25 p.m.	Sudden Death in Hypertrophic Cardiomyopathy	Bernard Gersh
4:25 – 4:50 p.m.	Regenerative Medicine for Heart Failure	Timothy Henry
4:50 – 5:15 p.m.	Innovations in Pulmonary Embolism Care: PERT, CDL and More	Terry Bowers
5:15 – 5:40 p.m.	The Shock Team: Does My Hospital Need One?	Manesh Patel
5:40 – 6:05 p.m.	LVAD for the non-LVAD Clinician	Larry Allen
6:05 – 6:30 p.m.	Support for the Failing Right Heart: Drug, Devices and Pumps	Todd Bull

## WED, FEB. 14

<b>6:30 – 7:00 a.m.</b>	<b>Breakfast and Exhibits</b>	
<b>7:00 – 9:30 a.m.</b>	<b>Clinical Controversies</b> <b>Moderators: Simon Dixon, Christopher Granger</b>	
7:00 – 7:25 a.m.	Socioeconomic Status and Cardiovascular Disease	Bernard Gersh
7:25 – 7:50 a.m.	Pass the Olive Oil or Pass the Butter? Is Food Epidemiology Hopeless?	Daniel Mark
7:50 – 8:15 a.m.	Update on Carotid Stenting and Acute Stroke Management	Kevin Rogers
8:15 – 8:40 a.m.	End of Life Decision Making	Larry Allen
8:40 – 9:05 a.m.	Treatment Goals in Hypertension: Deciphering the Data	Eric Peterson
9:05 – 9:25 a.m.	Q&A	Panel
9:25 – 9:30 a.m.	Conclusion	Simon Dixon



# INFORMATION

## Accommodations

The Park Hyatt Beaver Creek, located next door to Gerald R. Ford Hall, is the host hotel for our conference. The Park Hyatt's location at the base of the mountain, ski-in/ski-out convenience, and unparalleled attention to detail, service and comfort make it an excellent choice for accommodations.

Reserve your room by Jan. 5, 2018, at the group rate of \$514 + tax, per night.

Occupancy	Cut-off: 1/5/2018
Single/Double/King	\$514 + tax

The group rate is first-come, first-served, based on availability. Reserve your room at the Park Hyatt by calling 1-888-421-1442 and identify yourself as being with 27th Annual Cardiovascular Conference. Room upgrades are available for an additional cost.

### Reservation cut-off is Jan. 5, 2018

**Check in: 4 p.m., Check out: 12 p.m.**

Hotel contracts require Beaumont to be financially liable for unused rooms. The room rate covers the cost of meeting space and the labor for meeting room set up. Staying at the conference hotel also provides you with the benefit of after-hours networking and easy accessibility to the meeting and exhibits. Please help Beaumont avoid unnecessary penalties and keep registration fees low by booking your room at the Park Hyatt.

## Transportation, lift ticket and equipment information

### Airport shuttle

Colorado Mountain Express offers a scheduled transfer service seven days a week from the Denver International Airport and Vail/Eagle Airport to Beaver Creek. For discounted reservations call **1-970-754-7433** and reference the group code **BEAUMONT** or log on to <https://coloradomountainexpress.hudsonltd.net/rwd?USERIDENTRY=BEAUMONT&LOGON=GO>.

### Advance lift tickets

Discounted lift tickets will be valid Feb. 7-18, 2018 and can be used at Beaver Creek (including Bachelor Gulch and Arrowhead), Vail, Keystone, Breckenridge and Arapahoe Basin. Deadline to pre-order discount lift tickets is Friday, Jan. 12. Lift tickets can be purchased online when registering for the conference.

### Equipment rental

Black Tie Ski Rental, Free Delivery, In-Room Fitting and Slopeside Service will be offering a 30% discount on equipment rental. To make an equipment reservation, call 1-970-748-8552 or log on to [www.booknow.blacktieskis.com/portals/cardiovascular27](http://www.booknow.blacktieskis.com/portals/cardiovascular27).

**Be sure to use coupon code Cardio27 for the discount.**

### Additional information

For information on attractions and the local area, please visit [www.beavercreek.snow.com](http://www.beavercreek.snow.com).

## Registration information

Registering for the 27th Annual Cardiovascular Conference is easy. You may register online, by fax or phone until Feb. 7, 2018. Only registrations with payment will be processed.

### Online:

<http://beaumont.cloud-cme.com/beavercreek2018>

### Fax:

248-898-9075

### Phone:

800-732-6368

Pre-registration rates are available until Jan. 5, 2018. Online registration closes on Feb. 7, 2018. After Feb. 7, please register on-site at the Gerald R. Ford Hall.

## Registration fees

Registration Type	On or before 1/5/18	After 1/5/18
Attending Physician	\$900	\$1100
Resident, NP, PA-C, other health care providers	\$500	\$650
CV Team Symposium ONLY Saturday, Feb. 10	\$75	\$100
Family Meal Plan <i>*Children are complimentary (up to 18 yrs. old)</i>	\$350	\$350
Adult Guest Meal Plan	\$200	\$200
Welcome Reception Sunday, Feb. 11	<b>Complimentary</b>	

The conference registration fee includes all general sessions, course syllabus, and food and beverage functions Sunday through Wednesday for the registrant only.

Meal packages include all food and beverage functions Sunday through Wednesday.

## Cancellation policy

By registering for the conference, you are indicating you have read and accept the following cancellations terms. To be valid, Beaumont Health must receive notification of your cancellation in writing.

A full refund less a \$100 cancellation fee will be issued if written notification is received by Jan. 5, 2018. No refunds will be issued after Jan. 5, 2018.

The course directors reserve the right to cancel the conference due to unforeseen circumstances. In the unlikely event the conference is cancelled, a refund will be issued for the registration fee and any guest fees paid only. No refund or other compensation will be given for any related costs, charges, or expenses to participants, including fees assessed by airline / travel / lodging agencies.



# REGISTRATION FORM


## 27TH ANNUAL CARDIOVASCULAR CONFERENCE

Name:		<input type="checkbox"/> MD <input type="checkbox"/> DO <input type="checkbox"/> PA-C <input type="checkbox"/> NP <input type="checkbox"/> RN <input type="checkbox"/> Other:	
Address:	City:	State:	Zip:
City, State for name badge (if different from above):			
Telephone:	Fax:	Email:	
Specialty: <input type="checkbox"/> Clinical Cardiology <input type="checkbox"/> Interventional Cardiology <input type="checkbox"/> Cardiothoracic Surgery <input type="checkbox"/> Internal Medicine <input type="checkbox"/> Family Practice <input type="checkbox"/> Other:			

<b>Form of Payment</b> <input type="checkbox"/> Check payable to <b>Beaumont Health</b>	Credit Cards Accepted: <input type="checkbox"/> American Express <input type="checkbox"/> Discover <input type="checkbox"/> MasterCard <input type="checkbox"/> Visa
Card Number:	Exp. Date: / / Security Code:
Name on Card:	

Registration Fees	On or before 01/05/18	After 01/05/18	#	TOTAL
<input type="checkbox"/> Attending physician	\$900	\$1100		\$
<input type="checkbox"/> Resident, NP, RN, PA-C, other healthcare providers	\$500	\$650		\$
<input type="checkbox"/> CV Team Symposium ONLY - Saturday, Feb. 10, 2018	\$75	\$100		\$
<input type="checkbox"/> Family Meal Package *Children are complimentary (up to 18 yrs. old)	\$350	\$350		\$
<input type="checkbox"/> Adult Guest Meal Package	\$200	\$200		\$
<input type="checkbox"/> Welcome Reception - Sunday, Feb. 11, 2018	<b>Complimentary</b>			\$
<input type="checkbox"/> Complex and High Risk Coronary Intervention: Tips and Tricks, Dinner Program - Sunday, Feb. 11, 2018	<b>Complimentary</b>			\$
			SUBTOTAL	\$
			<b>TOTAL</b>	\$

Please provide guest first and last names as you would like them to appear on badges.

Adult guests:
Children's names:
<input type="checkbox"/> If you have any special requirements to fully participate in this conference, please check here and include written description of your needs. You will be contacted to discuss how we can best assist you. 
Online registration closes <b>Feb. 7, 2018</b> . After that date, only on-site registration will be available.

## ADVANCE SKI TICKET ORDER FORM

Name:		<input type="checkbox"/> MD <input type="checkbox"/> DO <input type="checkbox"/> PA-C <input type="checkbox"/> NP <input type="checkbox"/> RN <input type="checkbox"/> Other:	
Address:	City:	State:	Zip:
City, State for name badge (if different from above):			
Telephone:	Fax:	Email:	
<b>Form of Payment</b> <input type="checkbox"/> Check payable to <b>Beaumont Health</b>	Credit Cards Accepted: <input type="checkbox"/> American Express <input type="checkbox"/> Discover <input type="checkbox"/> MasterCard <input type="checkbox"/> Visa		
Card Number:	Exp. Date: / / Security Code:		
Name on Card:			

Discounted lift tickets will be valid Feb. 7-18, 2018 and can be used at Beaver Creek (including Bachelor Gulch and Arrowhead), Vail, Keystone, Breckenridge and Arapahoe Basin.

Deadline to pre-order discount lift tickets is Friday, Jan. 12, 2018.

Total # of Tickets	Total Amount Due
	\$

### RATES

	Adults 13+	Children 5-12
1 Day	\$145	\$100
2 out of 3 days	\$290	\$204
3 out of 5 days	\$406	\$281
4 out of 6 days	\$500	\$352
5 out of 8 days	\$585	\$457
6 out of 9 days	\$674	\$457
Kids 4 years and under ski for FREE!		

## WAYS TO REGISTER (for conference and advance ski lift ticket)

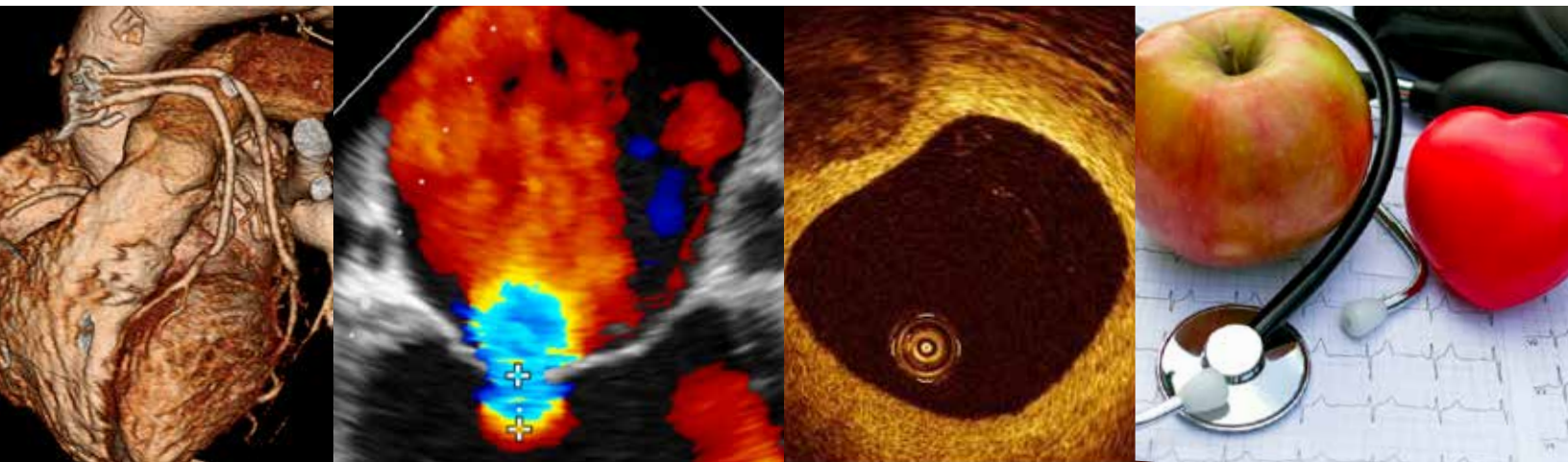
**ONLINE:** <http://beaumont.cloud-cme.com/beavercreek2018>  
**FAX:** 248-898-9075

**MAIL:** Completed registration form(s) and payment to:  
 Beaumont Health System  
 Department of Cardiovascular Medicine  
 Attn: Shannon Herrington  
 3601 West Thirteen Mile Road  
 Royal Oak, MI 48073-6769

**QUESTIONS?**  
 Contact Heart and Vascular  
 Conference Department  
 800-732-6368  
 or via email at:  
[HeartandVascularConferences@beaumont.edu](mailto:HeartandVascularConferences@beaumont.edu)

# Beaumont

Department of Cardiovascular Medicine  
3601 West 13 Mile Road  
Royal Oak, MI 48073-6769



## 27th Annual Cardiovascular Conference

America's Premier Meeting on Innovations in Cardiovascular Medicine

**Feb. 10 - 14, 2018**

Park Hyatt Beaver Creek, Beaver Creek, CO

*Sponsored by*

**Beaumont**



Colorado  
CHAPTER

*In collaboration with*

**Duke University School of Medicine  
Mayo Clinic  
University of Colorado School of Medicine**